

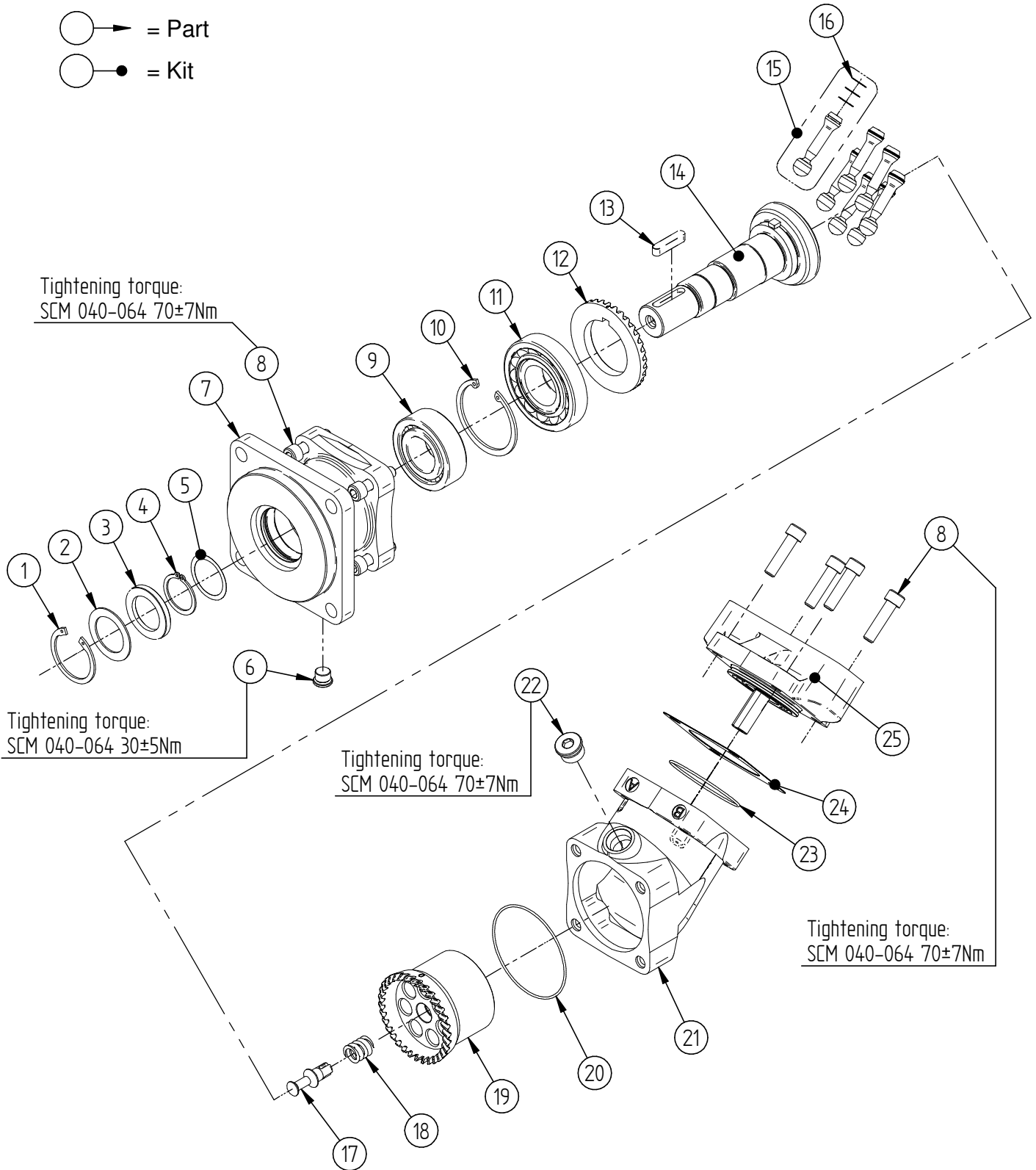


Contents

Exploded view.....	3
SCM 040 SAE.....	4
SCM 047 SAE.....	5
SCM 056 SAE.....	6
SCM 064 SAE	7
SEAL KITS.....	8



○ → = Part
○ ● = Kit





SCM 040 SAE

Item	Part No.	Title	Type*	Qty.
1	91923	Lock ring		1
2	30007	Washer		1
3	91630	Shaft seal	N - Nitrile	1
3	91722	Shaft seal	H - Nitrile, High pressure	1
3	91825	Shaft seal	V - Viton, High temperature	1
3	92293	Shaft seal	P - FPM, High temp./pressure	1
4	90780	Lock ring		1
5	50614	Shim		1
6	91728	Plug		1
7	30042	Bearing housing	SC4 - SAE C 4-Hole	1
8	91617	Bolt		8
9	91838	Roller bearing		1
10	91839	Lock ring		1
11	91603	Tapered roller bearing		1
12	20046	Gear ring	Straight gears**	1
13	91726	Key		1
14	30192	Shaft	C14 - Spline 14T 12/24	1
14	50817	Shaft	C21 - Spline 21T 16/32	1
14	30149	Shaft	C32 - Key Ø31,7mm	1
15	50275	Piston		7
16	20095	Piston rings		21
17	21047	Spring pin		1
18	92060	Spring		1
19	21094	Cylinder barrel	Straight gears**	1
20	91652	O-ring		1
21	30075	Angular housing		1
22	91735	Plug		1
23	91653	O-ring		1
24	20058	Shim		1
25	30459	Connection Cover	S2U	1
25	30578	Connection Cover	V2U	1
25	30588	Connection Cover	R1U	1
25	30122	Connection Cover	S2M	1
25	30111	Connection Cover	V2M	1
25	30114	Connection Cover	R1M	1

*For different types, see datasheet at <http://www.sunfab.com> or contact Sunfab

**NOTE: If the motor has helical gears both item 12 & 19 needs to be replaced to parts with straight gears



SCM 047 SAE

Item	Part No.	Title	Type*	Qty.
1	91923	Lock ring		1
2	30007	Washer		1
3	91630	Shaft seal	N - Nitrile	1
3	91722	Shaft seal	H - Nitrile, High pressure	1
3	91825	Shaft seal	V - Viton, High temperature	1
3	92293	Shaft seal	P - FPM, High temp./pressure	1
4	90780	Lock ring		1
5	50614	Shim		1
6	91728	Plug		1
7	30042	Bearing housing	SC4 - SAE C 4-Hole	1
8	91617	Bolt		8
9	91838	Roller bearing		1
10	91839	Lock ring		1
11	91603	Tapered roller bearing		1
12	20335	Gear ring	Helical gears	1
12	20046	Gear ring	Straight gears	1
13	91726	Key		1
14	30192	Shaft	C14 - Spline 14T 12/24	1
14	50817	Shaft	C21 - Spline 21T 16/32	1
14	30149	Shaft	C32 - Key Ø31,7mm	1
15	50281	Piston		7
16	20032	Piston rings		21
17	21047	Spring pin		1
18	92060	Spring		1
19	21095	Cylinder barrel	Straight gears	1
20	91652	O-ring		1
21	30075	Angular housing		1
22	91735	Plug		1
23	91653	O-ring		1
24	20058	Shim		1
25	30061	Connection Cover	S2U	1
25	30579	Connection Cover	V2U	1
25	30589	Connection Cover	R1U	1
25	30222	Connection Cover	S2M	1
25	30252	Connection Cover	V2M	1
25	30291	Connection Cover	R1M	1

*For different types, see datasheet at <http://www.sunfab.com> or contact Sunfab



SCM 056 SAE

Item	Part No.	Title	Type*	Qty.
1	91923	Lock ring		1
2	30007	Washer		1
3	91630	Shaft seal	N - Nitrile	1
3	91722	Shaft seal	H - Nitrile, High pressure	1
3	91825	Shaft seal	V - Viton, High temperature	1
3	92293	Shaft seal	P - FPM, High temp./pressure	1
4	90780	Lock ring		1
5	50614	Shim		1
6	91728	Plug		1
7	30042	Bearing housing	SC4 - SAE C 4-Hole	1
8	91617	Bolt		8
9	91838	Roller bearing		1
10	91839	Lock ring		1
11	91603	Tapered roller bearing		1
12	20046	Gear ring	Straight gears**	1
13	91726	Key		1
14	30192	Shaft	C14 - Spline 14T 12/24	1
14	50817	Shaft	C21 - Spline 21T 16/32	1
14	30149	Shaft	C32 - Key Ø31,7mm	1
15	50289	Piston		7
16	20402	Piston rings		21
17	21047	Spring pin		1
18	92060	Spring		1
19	21096	Cylinder barrel	Straight gears**	1
20	91652	O-ring		1
21	30075	Angular housing		1
22	91735	Plug		1
23	91653	O-ring		1
24	20058	Shim		1
25	30467	Connection Cover	S2U	1
25	30580	Connection Cover	V2U	1
25	30590	Connection Cover	R1U	1
25	30343	Connection Cover	S2M	1
25	30345	Connection Cover	V2M	1
25	30347	Connection Cover	R1M	1

*For different types, see datasheet at <http://www.sunfab.com> or contact Sunfab

**NOTE: If the motor has helical gears both item 12 & 19 needs to be replaced to parts with straight gears



SCM 064 SAE

Item	Part No.	Title	Type*	Qty.
1	91923	Lock ring		1
2	30007	Washer		1
3	91630	Shaft seal	N - Nitrile	1
3	91722	Shaft seal	H - Nitrile, High pressure	1
3	91825	Shaft seal	V - Viton, High temperature	1
3	92293	Shaft seal	P - FPM, High temp./pressure	1
4	90780	Lock ring		1
5	50614	Shim		1
6	91728	Plug		1
7	30042	Bearing housing	SC4 - SAE C 4-Hole	1
8	91617	Bolt		8
9	91838	Roller bearing		1
10	91839	Lock ring		1
11	91603	Tapered roller bearing		1
12	20046	Gear ring	Straight gears**	1
13	91726	Key		1
14	30192	Shaft	C14 - Spline 14T 12/24	1
14	50817	Shaft	C21 - Spline 21T 16/32	1
14	30149	Shaft	C32 - Key Ø31,7mm	1
15	50282	Piston		7
16	20033	Piston rings		21
17	21047	Spring pin		1
18	92060	Spring		1
19	21097	Cylinder barrel	Straight gears**	1
20	91652	O-ring		1
21	30075	Angular housing		1
22	91735	Plug		1
23	91653	O-ring		1
24	20058	Shim		1
25	30062	Connection Cover	S2U	1
25	30581	Connection Cover	V2U	1
25	30591	Connection Cover	R1U	1
25	30224	Connection Cover	S2M	1
25	30255	Connection Cover	V2M	1
25	30293	Connection Cover	R1M	1

*For different types, see datasheet at <http://www.sunfab.com> or contact Sunfab

**NOTE: If the motor has helical gears both item 12 & 19 needs to be replaced to parts with straight gears



SCM 040-064 SAE Seal Kits

Part No.	Includes Items	Title	Type*
50542	1, 2, 3	Shaft seal kit	N - Nitrile
50543	1, 2, 3	Shaft seal kit	H - Nitrile, High pressure
50544	1, 2, 3	Shaft seal kit	V - Viton, High temperature
50965	1, 2, 3	Shaft seal kit	P - FPM, High temp./pressure
50478	1, 2, 3, 20, 23, 24	Seal kit	N - Nitrile
50480	1, 2, 3, 20, 23, 24	Seal kit	H - Nitrile, High pressure
50479	1, 2, 3, 20, 23, 24	Seal kit	V - Viton, High temperature
50992	1, 2, 3, 20, 23, 24	Seal kit	P - FPM, High temp./pressure

*For different types, see datasheet at <http://www.sunfab.com> or contact Sunfab